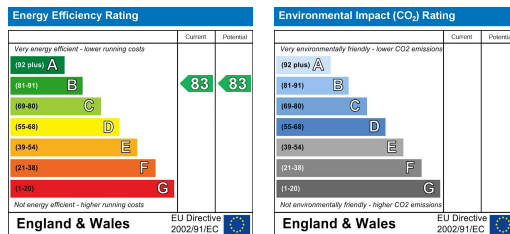
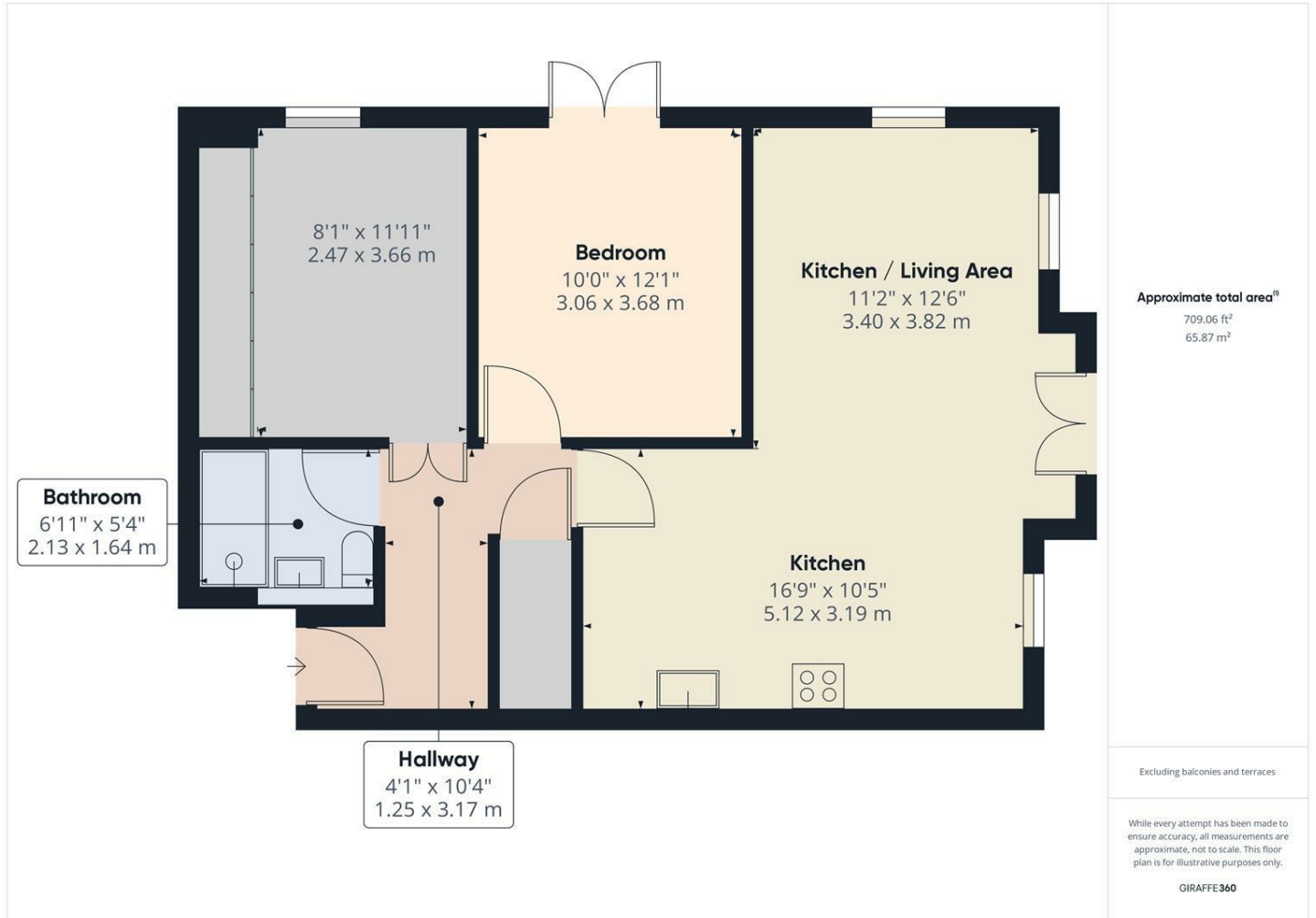




Apt 36 Woodseats Mews Woodseats Road, Sheffield S8 0SU £850 Per Calendar Month

Available to let is this stunning two bedroom second floor apartment situated in the prime location of Woodseats Mews. Ideal for the single professional/couple, the property comprises; entry hallway with secure intercom, spacious open plan lounge and kitchen which benefits from a washer dryer, dishwasher, cooker and fridge freezer. Master double bedroom with balcony, double bedroom 2 with wall length built in wardrobes, bathroom with large shower enclosure.

Outside; communal grounds and 1 allocated parking space. PART FURNISHED 6-12 MONTH TENANCY. Restrictions: No smokers, no sharers, pets by negotiation. Energy Efficiency Rating C. Council Tax Band B



Banner Cross
Hathersage
Bakewell
Matlock
www.saxtonmee.co.uk

949-951 Ecclesall Road, Sheffield S11 8TN
3 Bank View, Main Road, Hathersage S32 1BB
Matlock Street, Bakewell DE45 1EE
27 Causeway Lane, Matlock, DE4 3AR

T: 0114 268 3241
T: 01433 650009
T: 01629 815307
T: 01629 828250

E: bannercross@saxtonmee.co.uk
E: hathersage@saxtonmee.co.uk
E: bakewell@saxtonmee.co.uk
E: matlock@saxtonmee.co.uk